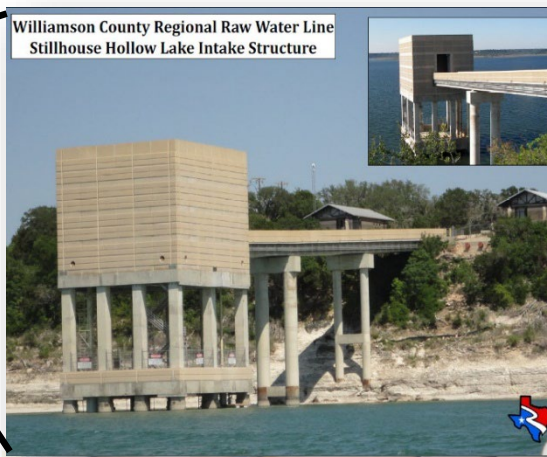
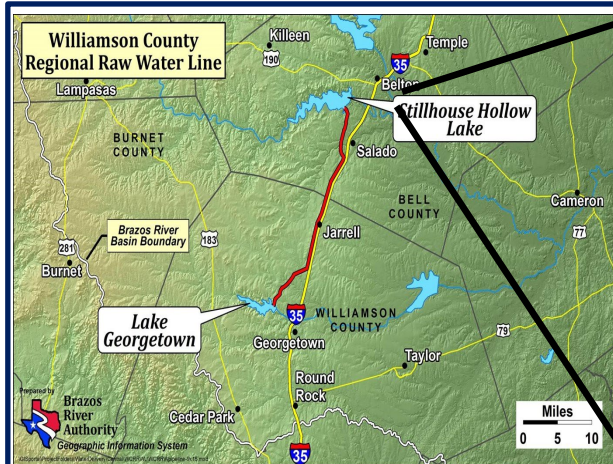




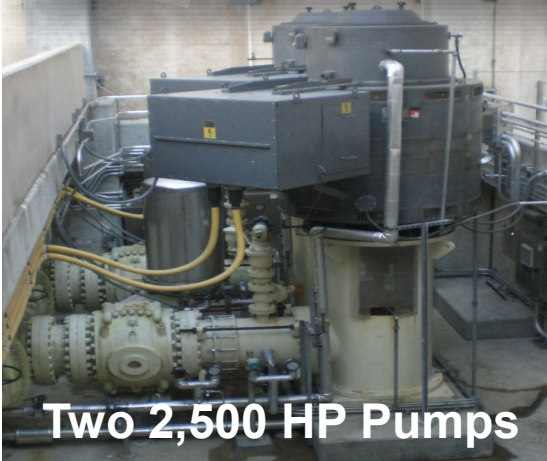
WCRRWL Phase 3 Pumps



The Williamson County Regional Raw Water Line is a 48-inch water line that runs 28 miles connecting Stillhouse Hollow Lake and Lake Georgetown to provide water supply to the City of Georgetown, the City of Round Rock and the Brushy Creek Municipal Utility District (MUD). The water pumps that supply the water line are housed in an intake structure/pump station on Stillhouse Hollow Lake. The pump station originally housed two 1,250 HP pumps to operate the water line. Anticipating future water demands, the intake structure was designed for up to four additional pumps. A Phase 2 Expansion added two 2,500 HP pumps. Projected future water demands indicate that additional pumping capacity will be required to supply water needs during drought conditions.



Two 1,250 HP Pumps



Two 2,500 HP Pumps

The Project

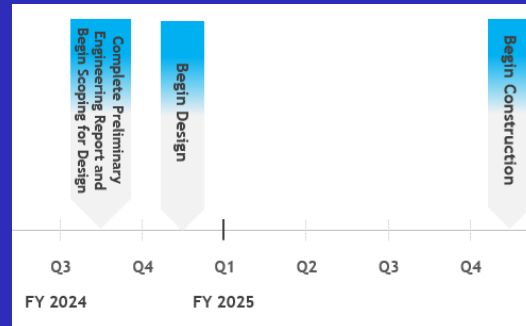
BRA and CDM Smith, the consulting engineer, will review and update water demand projections for Georgetown, Round Rock and Brushy Creek MUD to determine accurate water supply requirements and timing for expansion of the pumping capacity. The initial evaluation will also assess existing conditions of the intake structure, pump station and water line to determine if repairs or improvements are needed, and to determine the most efficient method to maximize pumping capacity, including the installation of additional pumps. Based on the initial evaluation, the BRA will implement recommended modifications to meet water supply requirements.

Current Project Status 2/2/2024

- The final version of the Preliminary Engineering Report will be completed in FY 24 Q3.
- CDM is currently working on the scope for the design phase that will begin in FY 24 Q4.
- The design phase should last approximately one year with construction to follow.

Planned Schedule

Note: BRA Fiscal Year Runs Sept to Aug



Budget Summary

FY 2024 Budget	\$3,012,000
FY 2024 Project Expenses (As of 12/31/2023)	\$169,081